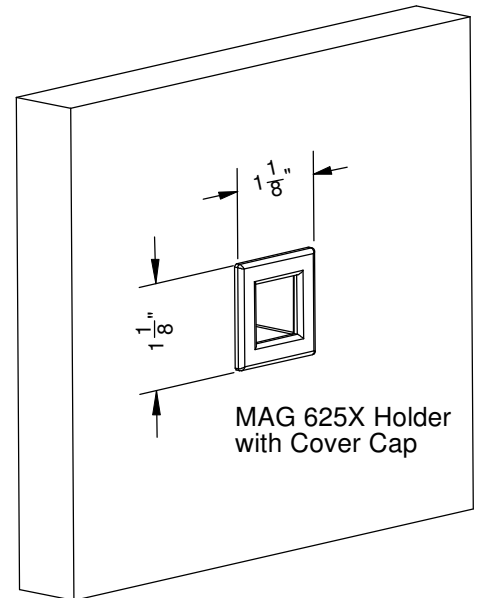
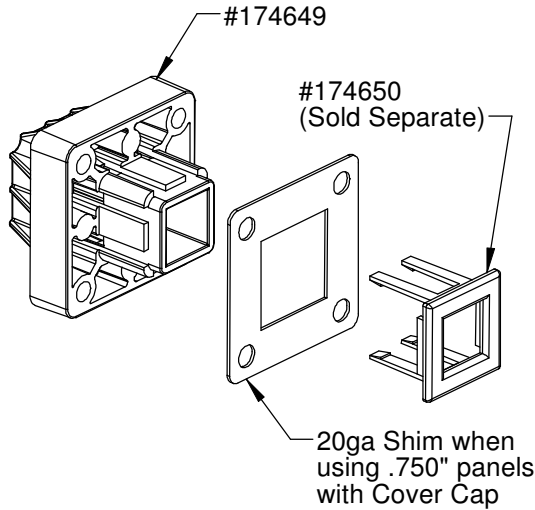
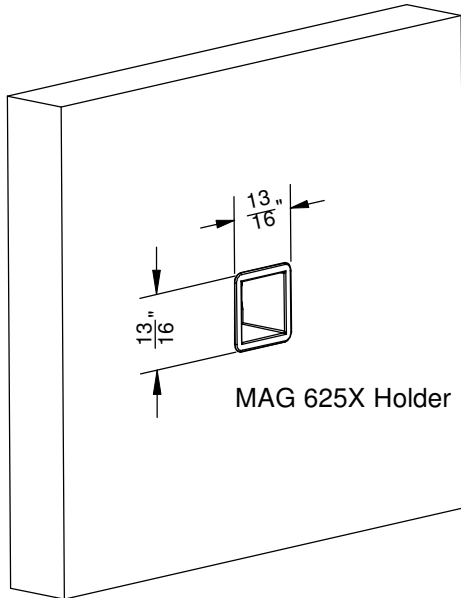


PRODUCT SUMMARY

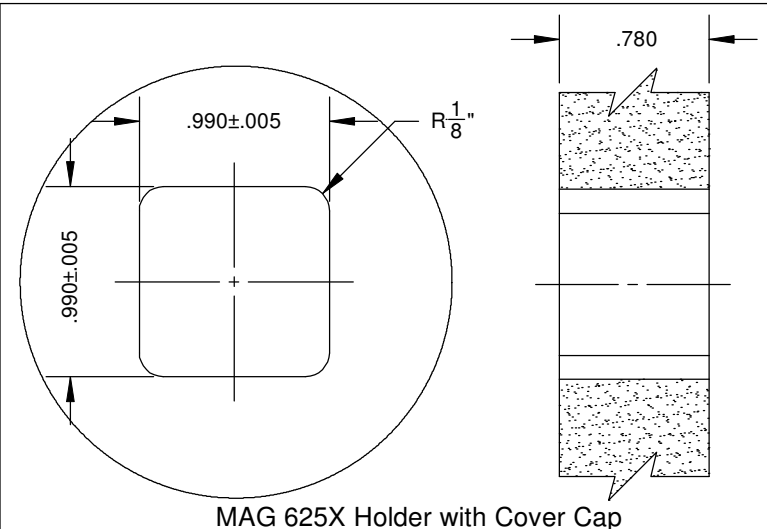
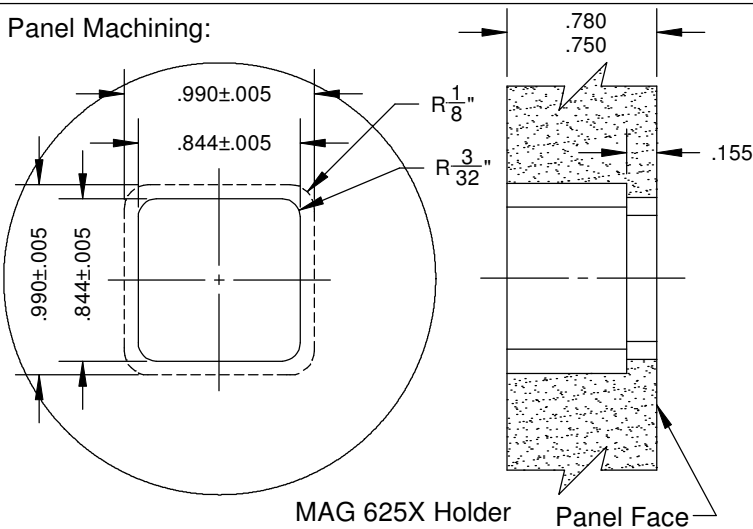


MAG 625

MAG 625X Holder



Panel Machining:

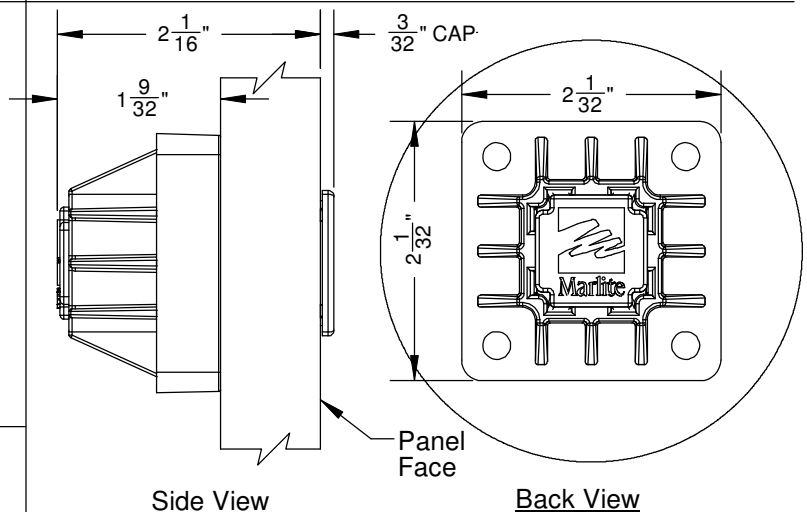


Key Installation Notes:

- Panel machining varies if the cover cap is used. It is critical to use the appropriate panel machining detail according to the drawings above.
- Holders must fit snug into the panel and be fully supported by the panel.
- Secure holders to the back of solid panels with screws. (#8 X 1" long sheet metal screws, not shown).

Weight Capacity:

Refer to MAG 625 Weight Loading Product Summary Sheet

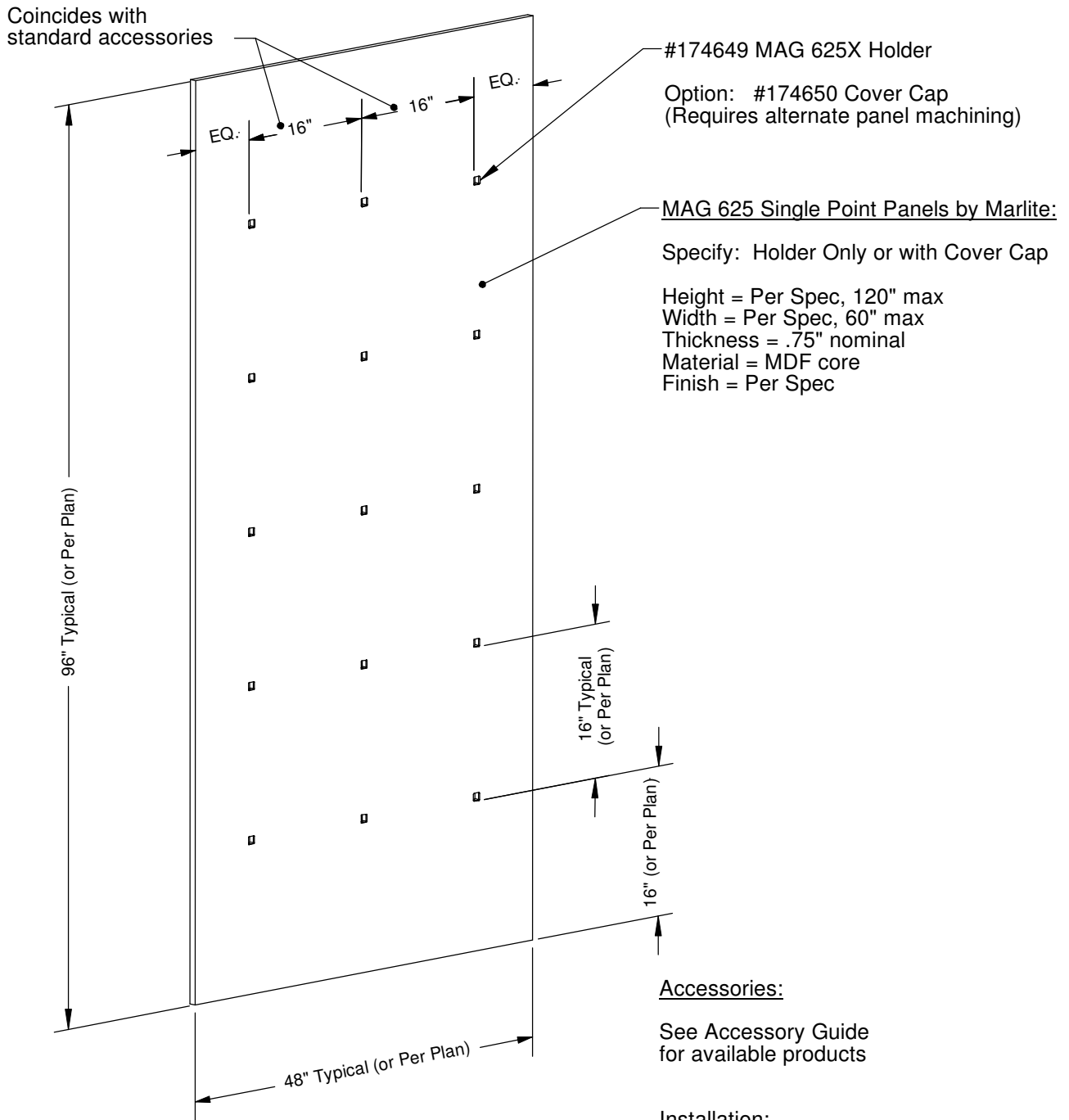


PRODUCT SUMMARY



MAG 625

MAG 625 Single Point Panels



Accessories:

See Accessory Guide for available products

Installation:

Preferred: Mar-Rail System by Marlite

Alternate: Wood Cleats 1-1/4" Thick